

Accessory List

TVT Texture Analysis



Rigs and Probes for Optimal Texture Analysis

Accessories

TVT

Probe Kits



Bread & Cake Products Probe Kit, consisting of:

Cylinder Probe, 3mm Diameter, SS	67.30.03
Cylinder Probe, 5mm Diameter, SS	67.30.05
Cylinder Probe, 18mm Diameter, SS, Radius	67.30.18
Cylinder Probe, 21mm Diameter, Alu, Radius	67.01.59
Cylinder Probe, 25mm Diameter, SS	67.30.25
Cylinder Probe, 25mm Diameter, SS, Radius	67.30.26
Cylinder Probe, 36mm Diameter, Alu, Radius	67.01.60
Cylinder Probe, 75mm Diameter, Alu	67.30.75

Part # 677010

For Method Descriptions Bakery group 01 and 02



Biscuits & Cookies Probe Kit, consisting of:

Cylinder Probe, 2mm Diameter, SS	67.30.02
Break Probe, 70mm, Aluminium	67.11.70
Three Point Bend Rig	67.50.40
Craft Blade Knife	67.13.80
Heavy Duty Stand	67.50.80
HDS insert with 10 mm hole	67.50.81

Part # 677015

For Method Descriptions Bakery group 06 and 07



Dairy Products Probe Kit, consisting of:

Cylinder Probe, 5mm Diameter, SS	67.30.05
Cylinder Probe, 10mm Diameter, SS	67.30.10
Cylinder Probe, 25mm Diameter, SS	67.30.25
Cone Probe, 45°, SS	67.15.45
Spherical Probe, 1 Inch Diameter	67.31.25
Cutting Wire, 90mm Length, 0.4mm Gauge	67.13.95
Warner Bratzler Knife Blade w. probe holder	67.13.06
<i>Back Extrusion Set, 60mm, consisting of:</i>	67.50.60
Back Extrusion Container Holder	67.50.31
Container, 60mm Height, 50mm Diameter	2x 67.50.65
Compression Plate, 35mm Diameter, SS	67.20.35
Compression Plate, 40mm Diameter, SS	67.20.40
Compression Plate, 45mm Diameter, SS	67.20.45

Part # 677030

For Method Descriptions Dairy group 21 to 26

Cylinder Probes

This is the most common type of probe and they are used for most puncture, compression, adhesiveness and extrusion tests. The diameter chosen is depending on the product and the type of measurement to be tested. A small sample is best tested with a narrow probe for e.g. puncture test. For compression test the diameter should be equal to the sample diameter.



2mm Diameter, Stainless Steel

Hardness of cookies and texture of butter typically using 2-5mm cylinder probes.

P-CY02S

Part # 673002

3mm Diameter, Stainless Steel

Puncture test typically using 10mm or larger diameter cylinder probes.

P-CY03S

Part # 673003

5mm Diameter, Stainless Steel

P-CY05S

Part # 673005

6mm Diameter, Stainless Steel

P-CY06S

Part # 673006

10mm Diameter, Stainless Steel

P-CY10S

Part # 673010

11,28mm Diameter (1.00 cm²), Stainless Steel

Part # 670298

12mm Diameter, Stainless Steel

P-CY12S

Part # 673012

18mm Diameter, Stainless Steel, w. Radius

The edge has a 0.1 mm Radius

P-CY18R

Part # 673018

20mm Diameter, Stainless Steel

P-CY20S

Part # 673020

25mm Diameter, Stainless Steel

P-CY25S

Part # 673025

25mm Diameter, Stainless Steel, w. Radius

The edge has a 0.1 mm Radius.

P-CY25R

Part # 673026

30mm Diameter, Stainless Steel

P-CY30S

Part # 673030

35mm Diameter, Stainless Steel

P-CY35S

Part # 673035

40mm Diameter, Stainless Steel

P-CY40S

Part # 673040

45mm Diameter, Stainless Steel

P-CY45S

Part # 673045

50mm Diameter, Stainless Steel

P-CY50S

Part # 673050

60mm Diameter, Stainless Steel

P-CY60S

Part # 673060

75mm Diameter, Aluminium

Compression of fruit typically using 75mm diameter

P-CY75A

Part # 673075

4 inch (101.6mm) Diameter, Stainless Steel

Part # 670225

21mm Diameter, Aluminium, AACCI 74-09

The edge has a 0.1 mm Radius

Part # 670159

36mm Diameter, Aluminium, AACCI 74-09

The edge has a 0.1 mm Radius.

Part # 670160

Puncture test of bread typically use 21 or 36mm diameter with radius.

12,7 mm Diameter, Perspex

Part # 670294

25 mm Diameter, Perspex

Part # 670265

Bloom test jar

Part # 673290



Compression Plates

These probes are used for compression, adhesiveness and extrusion testing. The probes are mostly used for semi-liquid products like yoghurt or irregular shaped products like pasta shapes. In an extrusion test the probe diameter should be slightly smaller than the container used, so the probe can move through the container without contacting the walls.



35mm Diameter, Stainless Steel	P-CP35S	Part # 672035
40mm Diameter, Stainless Steel	P-CP40S	Part # 672040
45mm Diameter, Stainless Steel	P-CP45S	Part # 672045
Best suited with the 60mm high and 50mm diameter Container (RA-C-60H50D).		
75mm Diameter, Aluminium	P-CY75A	Part # 673075
Compression of fruit typically using 75mm diameter		

Spherical Probes

These spherical probes are for testing soft and sensitive products, often to simulate a finger pressing down into the product. Fish is an example of application.



5 mm Diameter	P-SP5	Part # 673105
0.25 Inch Diameter	P-SP0.25	Part # 673106
10 mm Diameter	P-SP10	Part # 673110
0.5 Inch Diameter	P-SP0.5	Part # 673112
15 mm Diameter	P-SP15	Part # 673115
1 Inch Diameter	P-SP1	Part # 673125

Cone Probes

The conical probes are used to test plastic and soft products, for example to simulate the spreading of butter or cream cheese.



40° Stainless Steel	P-CO40S	Part # 671540
45° Stainless Steel	P-CO45S	Part # 671545
60° Stainless Steel	P-CO60S	Part # 671560
90° Stainless Steel	P-CO90S	Part # 671590

Needle Probes



Needle probe		Part # 670170
---------------------	--	----------------------

Back Extrusion set



Back Extrusion Set, 60mm, consisting of:
 Compression Plate, 35mm Diameter, SS
 Compression Plate, 40mm Diameter, SS
 Compression Plate, 45mm Diameter, SS
 Container, 60mm Height, 50mm Diameter
 Back Extrusion Container Holder

R-BES-60 **Part # 675060**
 67.20.35
 67.20.40
 67.20.45
 2x 67.50.65
 67.50.31



Container, 60mm Height, 50mm Diameter
 Use together with Container Holder (R-BECH).
Back Extrusion Container Holder
 Holds the container in the same position during the test. For Container (RA-C-xxHxxD).

RA-C-60H50D **Part # 675065**
 R-BECH **Part # 675031**

Knife, Cutter and Break Probes

These probes are used for testing cutting force and hardness of products.



Blade Set, consisting of:
 Probe Holder Knife
 Knife Blade
 Triangular Blade
 Blade Set Insert - HDS

PS-BS **Part # 671300**
 67.13.30
 67.13.01
 67.13.03
 67.50.10

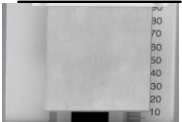


(Heavy Duty Stand (675080) is necessary but not included in the Blade Set)



Probe Holder Knife
 Holder for knife and triangular blades

P-PHK **Part # 671330**



Knife Blade, blade only
 For meat products, vegetables and cheese. Use together with the Heavy Duty Stand (HDS).

P-WBK **Part # 671301**



Triangular Blade, blade only
 For circular products, like sausage and shrimps.

P-WBT **Part # 671303**

Triangular Blade with holder
 For circular products, like sausage and shrimps.

Part # 671305

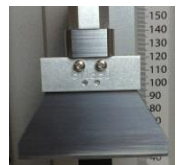
Knife Blade, with holder
 For meat products, vegetables and cheese. Use together with the Heavy Duty Stand (HDS).

Part # 671306



Blade Set Insert - for HDS
 For cutting tests. Enables the probe to completely penetrate the product.

RA-WBKS1 **Part # 675010**



Craft Blade Knife
 For cutting tests (sharp knife blade)

P-CBK **Part # 671380**

Spare blades for CBK, pack of 3.

Part # 671381



Cutting Wire Probe
For testing of butter and cheese.

P-CW9004

Part # 671395



Transparent Noodle Probe
For noodles test acc. to AACC 66-50, 66-52.

Part # 671350

Spare blade f. noodle probe AACC standard

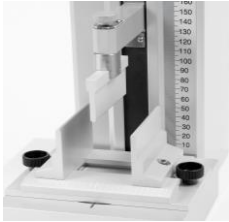
Part # 673306

Transparent Noodle Probe, sharp edge

Part # 671340

Spare blade f. Noodle probe, sharp edge

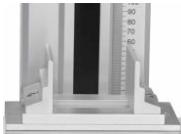
Part # 670146



Break Rig Set, consisting of:
Break Probe, 70mm, Aluminium
Three Point Bend Rig

P-TECKN-ING
67.11.70
67.50.40

Part # 675045



Three Point Bend Rig
For fracturability tests. Use together with the Break Probe (P-BP70A).

R-TPBR

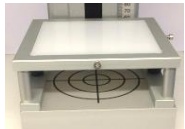
Part # 675040



Break Probe, 70mm Aluminium
For small cookies etc. Use together with the Three Point Bend Rig (R-TPBR).

P-BP70A

Part # 671170



Heavy Duty Stand (PP Insert 675011 included)
Use together with inserts listed below.

R-HDS

Part # 675080



Standard Insert
For cutting and hardness tests of products.

RA-HDSSI

Part # 675088

Insert w. hole 10 mm

For tensile tests.

RA-HDSIH10

Part # 675081

Insert w. hole 18 mm

For tensile tests.

RA-HDSIH18

Part # 675082

Insert w. hole 50 mm

For tensile tests.

RA-HDSIH50

Part # 675085



Polyethylene Protection Insert - HDS
For cutting tests, sticky and soft products and for protection of the base plate.

RA-HDSPPI

Part # 675011



Grain and Pellets Set
For hardness/brittleness test. Heavy Duty Stand (675080) is necessary but not included in the set.

Part # 675050

Parallel Clamp

For tensile test of ham etc.

R-PC

Part # 675025



Self Tightening Roller Grip

45mm width. For tensile test of noodles etc.

R-STRG

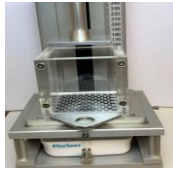
Part # 675021



**Kramer Shear cell**

Kramer Shear cell requires minimum 50 kg Load Cell.
(Heavy Duty Stand (675080) is necessary but not included in the Kramer Shear Cell kit)

Part # 670104

**Ottawa cell**

Ottawa cell requires minimum 50 kg Load Cell. (Heavy Duty Stand (675080) is necessary but not included in the Ottawa Cell kit)

Part # 670113

Adapters**Extension adapter 40 mm for TVT probes**

Part # 671097

**Adapter kit for SMS probes, consisting of:**

Part # 670021

SMS plate adapter (with screws)

68.03.11

SMS probe adapter (female)

68.03.12

SMS probe adapter, standard (male 23 mm)

67.10.03

SMS probe adapter (male, for hollowed out probes)

67.10.04

Extra (spare) Load Cells for TVT 6700 dual LC

Extra Load Cell, TVT 6700 (dual) 5 Kg

Part # 678205

Extra Load Cell, TVT 6700 (dual) 10 Kg

Part # 678210

Extra Load Cell, TVT 6700 (dual) 20 Kg

Part # 678220

Extra Load Cell, TVT 6700 (dual) 30 Kg

Part # 678230

Extra Load Cell, TVT 6700 (dual) 50 Kg

Part # 678250

Extra Load Cell, TVT 6700 (dual) 100 Kg

Part # 678200

Calibration Weights

Calibration Weight, 1 Kg, steel

Part # 679001

PERTEN INSTRUMENTS AB

P.O. Box 9006

126 09 Hägersten, Sweden

customerservice@perten.com

Tel: +46 8 505 80 900

Fax: +46 8 505 80 990

2019-10-31