

## *Lambda 365 Variable Angle Transmission Holder Installation Instructions*

---

This instruction sheet describes the installation of this accessory which is used with the Lambda 365 Spectrophotometer.

**NOTE:** *Read these instructions before you install this accessory.*

### ***Contacting PerkinElmer***

Supplies, replacement parts, and accessories can be ordered directly from PerkinElmer, using the part numbers.

See our website:

<http://perkinelmer.com>

PerkinElmer's catalog service offers a full selection of high-quality supplies.

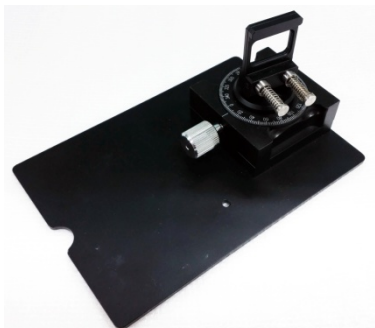
To place an order for supplies and many replacement parts, request a free catalog, or ask for information:

If you are located within the U.S., call toll free 1-800-762-4000, 8 a.m. to 8 p.m. EST. Your order will be shipped promptly, usually within 24 hours.

If you are located outside of the U.S., call your local PerkinElmer sales or service office.

### ***Features***

- Use for measuring the transmittance of various samples of film, glass, and plate, etc.
- Easy to installation and User-convenient sampling
- Excellent durability



**Figure 1 Lambda 365 Variable Angle Transmission Holder [P/N: N4101002]**



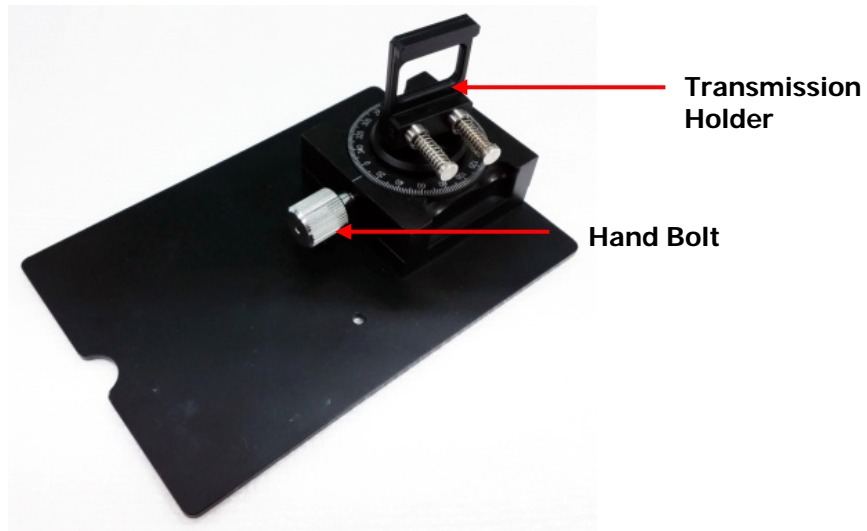
PerkinElmer, 710 Bridgeport Avenue,  
Shelton, CT 06484-4794, U.S.A

Produced in the USA.

## *Dimensions and Specifications*

Type	Specification
Dimension (mm)	120 (W) x 75 (H) x 170 (D)
Weight (kg)	0.48
Angle (Degree)	0 ~ 80 (Depend on sample size)
Sample Size (mm)	Max. Length : 100 x 100
	Max. Thickness : 13

## *Configuration of Variable Angle Transmission Holder*



**Figure 2** Lambda 365 Variable Angle Transmission Holder



**Figure 3** Knob

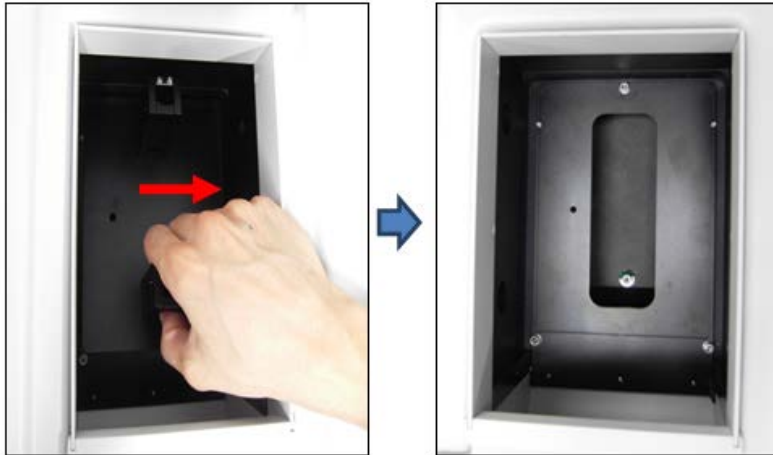
## Installation

1. Loosen the knob to take apart the existing cell holder.



**Figure 4 Loosening the knob**

2. Pull out the cell holder by hand.



**Figure 5 Pulling out the cell holder**

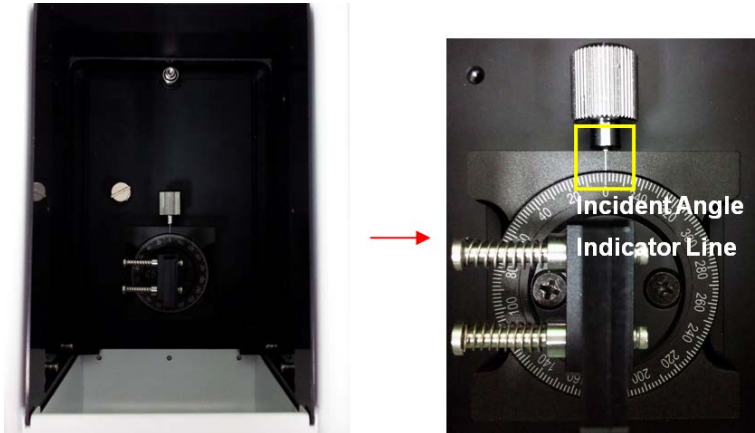
3. Insert the variable angle transmission holder in the sample compartment and tighten the knob.



**Figure 6 Inserting the variable angle transmission holder**

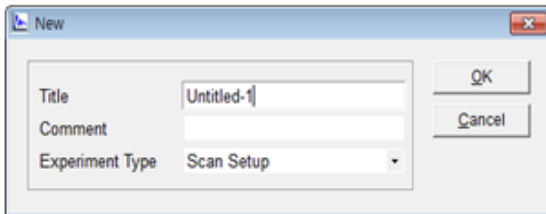
## Measurement

1. Place the variable angle transmission holder with incident angle indicator line facing the back side of the equipment.

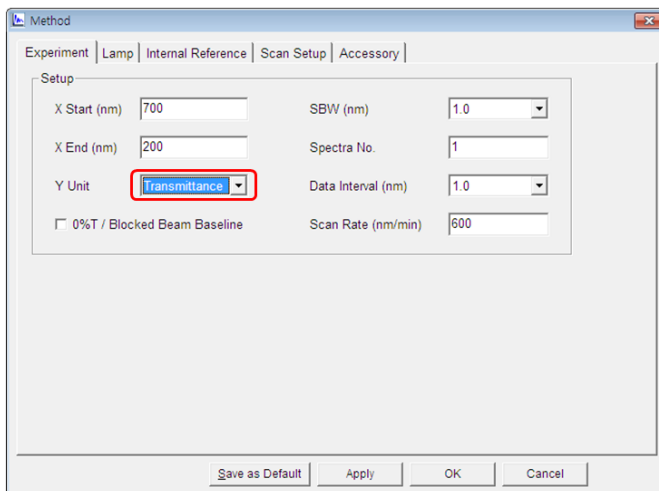


**NOTE:** Start the System Self Test after warming up the system at least 20 minutes.

2. Double-click **UV Express** folder and select **Scan** mode for starting.
3. Select **OK** after finishing the **System Self Test**.
4. Select **New** to open a new window. Select **Experiment Type** and select **OK**.



5. Open the method in the main menu. Select **Transmittance mode in Y unit**.



6. Select **Apply** and the select **OK** after setting up the parameters.

**NOTE:** For more detail of method, refer to UV Express Software Users Guide.

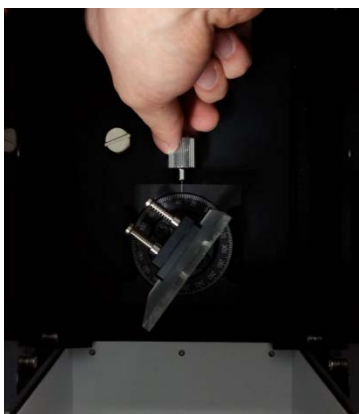
- Put the reference sample into the sample holder. If no reference sample exists, let the holder empty.



- Close the lid and select the **Baseline** icon.
- Measure and verify the baseline spectrum.
- Put the sample into the sample holder. Adjust the proper incident angle by rotating the holder.



- After setting the angle, fix it with the hand bolt. Close the lid and select the **Sample** icon.



- Input the sample name and select **OK**.
- Confirm the spectrum and results. Save or print the data.

