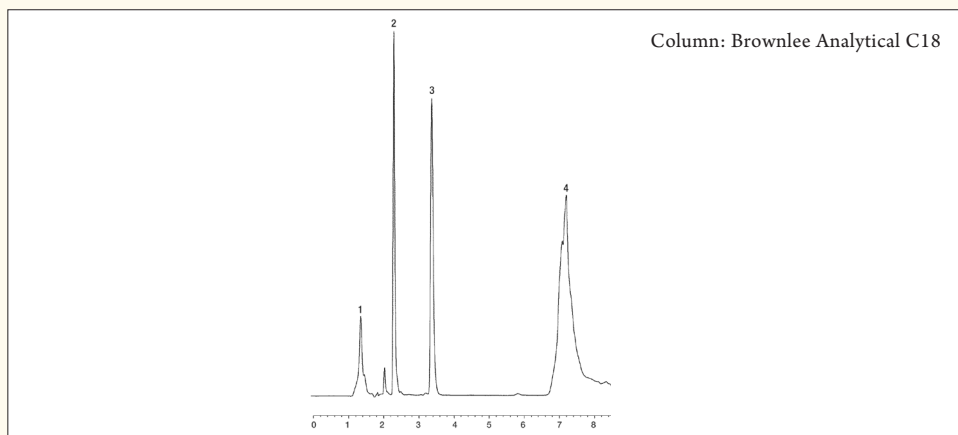




SUGARS/SWEETENERS HPLC

Foods and Flavors: Diet Cola on Brownlee Analytical C18



Peak List

1. citric acid
2. caffeine
3. aspartame
4. benzoic acid and other components

Column

Column name: Brownlee Analytical C18
Part number: N9303513
Dimensions: 150 x 4.6 mm
Particle size: 5 μm
Pore size: 110Å

Conditions

Mobile phase: A: 10 mM potassium phosphate monobasic with 0.1% v/v TEA, pH 2.9
B: acetonitrile

Time (min)	%B
0.00	20
4.99	20
5.00	75
9.99	75
10.00	20

Flow: 1.0 mL/min
Temperature: 27 °C
Detector: UV @ 210 °C

Sample

Injection volume: 5.0 μL
Solvent: raw sample diluted (50:50, v/v) with mobile phase A, filtered and injected.

Notes

Recommended Guard Cartridge N9303677
Recommended Guard Holder N9303713

PerkinElmer, Inc.
940 Winter Street
Waltham, MA 02451 USA
P: (800) 762-4000 or
(+1) 203-925-4602
www.perkinelmer.com



For a complete listing of our global offices, visit www.perkinelmer.com/ContactUs

Copyright ©2013 PerkinElmer, Inc. All rights reserved. PerkinElmer® is a registered trademark of PerkinElmer, Inc. All other trademarks are the property of their respective owners.

007572A_26