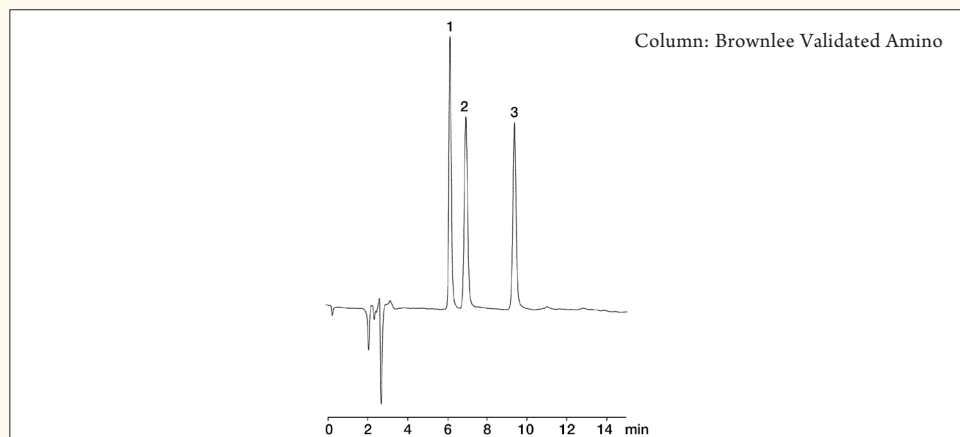




# SUGARS/SWEETENERS HPLC

## Foods and Flavors: Maple Flavored Syrup on Brownlee Validated Amino



### Peak List

1. fructose
2. glucose
3. sucrose

### Column

Column name: Brownlee Validated Amino  
Part number: N9303847  
Dimensions: 150 x 3.2 mm  
Particle size: 3  $\mu\text{m}$   
Pore size: 100Å

### Conditions

Mobile phase: water:acetonitrile (25:75, v/v)  
Flow: 0.8 mL/min  
Temperature: 35 °C  
Detector: refractive index @ 35 °C

### Sample

Injection volume: 20  $\mu\text{L}$   
Concentration: 10% solution of maple syrup  
Solvent: acetonitrile:water (70:30, v/v)

### Notes

Recommended Guard Cartridge N9303688  
Recommended Guard Holder N9303713

PerkinElmer, Inc.  
940 Winter Street  
Waltham, MA 02451 USA  
P: (800) 762-4000 or  
(+1) 203-925-4602  
[www.perkinelmer.com](http://www.perkinelmer.com)



For a complete listing of our global offices, visit [www.perkinelmer.com/ContactUs](http://www.perkinelmer.com/ContactUs)

Copyright ©2013 PerkinElmer, Inc. All rights reserved. PerkinElmer® is a registered trademark of PerkinElmer, Inc. All other trademarks are the property of their respective owners.

007572A\_23