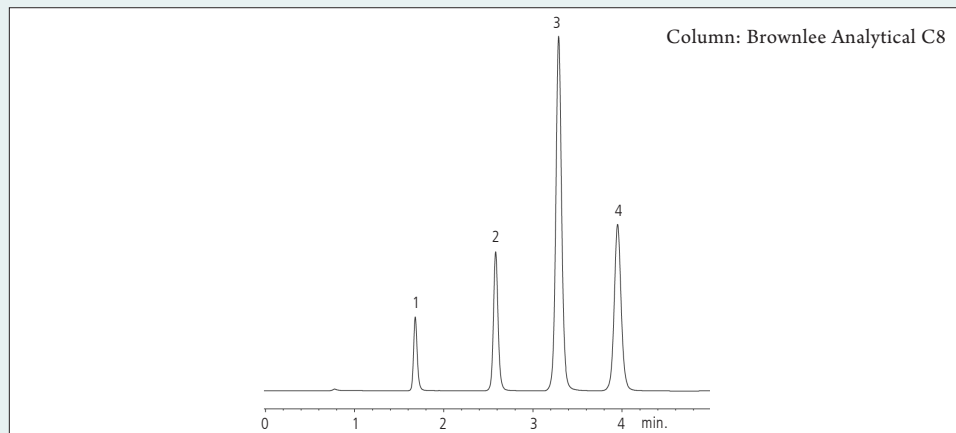




# TEST MIXES

## HPLC

### Industrial: Reversed Phase Test Mix on Brownlee Analytical C8



#### Peak List

Peak	Concentration (mg/mL)
1. uracil	0.02
2. benzene	3.0
3. naphthalene	0.5
4. biphenyl	0.06

#### Concentration (mg/mL)

#### Conditions

Mobile phase:	methanol:water (80:20, v/v)
Flow:	1.0 mL/min
Temperature:	ambient
Detector:	UV @ 254 nm
Pressure:	116 bar

#### Column

Column name:	Brownlee Analytical C8
Part number:	N9303517
Dimensions:	150 x 4.6 mm
Particle size:	5 $\mu$ m
Pore size:	110Å

#### Sample

Injection volume:	1.3 $\mu$ L
Solvent:	methanol:water (75:25, v/v)

#### Notes

Recommended Guard Cartridge	N9303679
Recommended Guard Holder	N9303713

PerkinElmer, Inc.  
940 Winter Street  
Waltham, MA 02451 USA  
P: (800) 762-4000 or  
(+1) 203-925-4602  
[www.perkinelmer.com](http://www.perkinelmer.com)



For a complete listing of our global offices, visit [www.perkinelmer.com/ContactUs](http://www.perkinelmer.com/ContactUs)

Copyright ©2013 PerkinElmer, Inc. All rights reserved. PerkinElmer® is a registered trademark of PerkinElmer, Inc. All other trademarks are the property of their respective owners.

007571A\_14