

## *Lambda 465 Advanced Transmission Holder Installation Instructions*

---

This instruction sheet describes the installation of this accessory which is used with the Lambda 465 Spectrophotometer.

**NOTE:** *Read these instructions before you install this accessory.*

### *Contacting PerkinElmer*

Supplies, replacement parts, and accessories can be ordered directly from PerkinElmer, using the part numbers.

See our website:

<http://perkinelmer.com>

PerkinElmer's catalog service offers a full selection of high-quality supplies.

To place an order for supplies and many replacement parts, request a free catalog, or ask for information:

If you are located within the U.S., call toll free 1-800-762-4000, 8 a.m. to 8 p.m. EST. Your order will be shipped promptly, usually within 24 hours.

If you are located outside of the U.S., call your local PerkinElmer sales or service office.

### *Features*

- Use for measuring the transmittance of various features of film, glass, and plate, etc.
- User-convenient sampling
- Adjustable fixing arms for the samples with various thickness
- Height controller to meet sample features
- Internal magnet for fixing sample



**Figure 1** Lambda 465 Advanced Transmission Holder [P/N: N4104005]



PerkinElmer, 710 Bridgeport Avenue,  
Shelton, CT 06484-4794, U.S.A

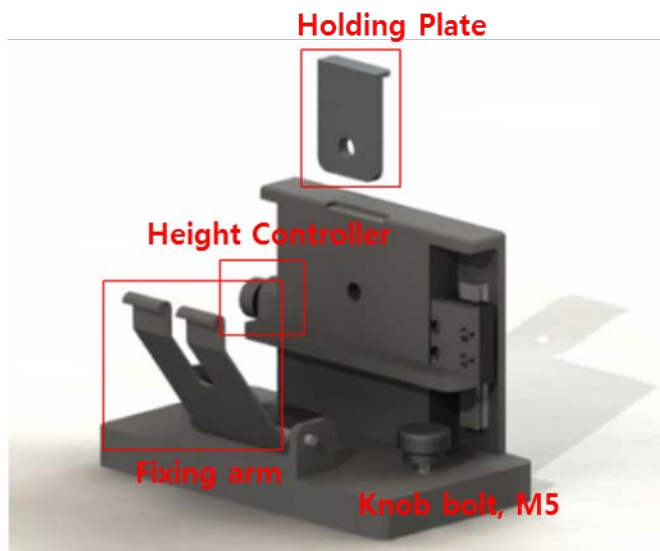
Produced in the USA.

## *Dimensions and Specifications*

Type	Specification
Dimension (mm)	100 (H) X 80 (W) X 150 (L)
Weight (kg)	1.0
Sample Size (mm)	Max. Length : 300 x 300
	Max. Thickness : 70

## *Description*

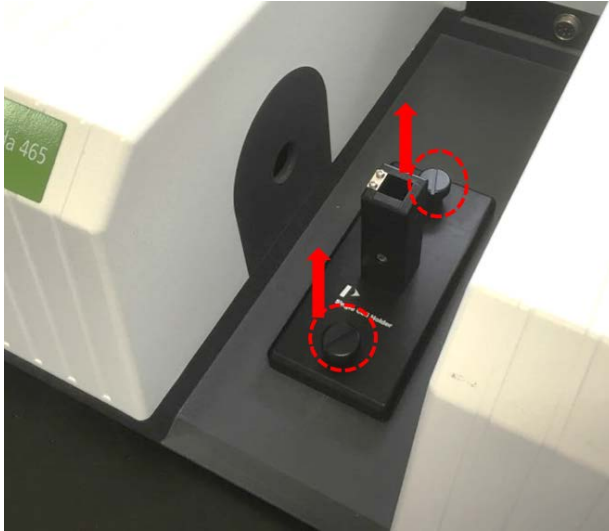
### *Configuration of Advanced Transmission Holder*



**Figure 2** Lambda 465 Advanced Transmission Holder configuration

## Installation

1. Disassemble the existing cell holder.



**Figure 3 Location of screws**

2. Install the advanced transmission holder by fastening the knob bolts.



**Figure 4 Fastening the bolts**

3. Connect the communication cable and the power cord, and then turn on the power of the Lambda 465.

## *Sampling*

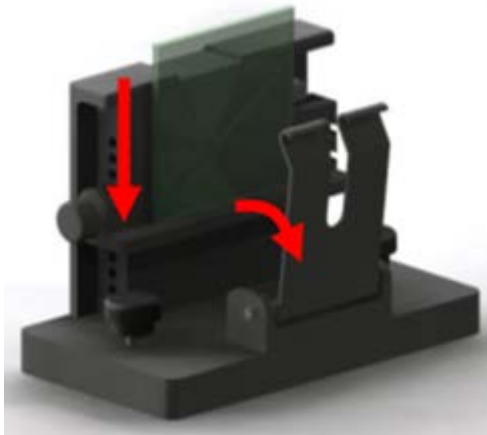
### *Proper Size Sample*

1. Prepare a sample plate.



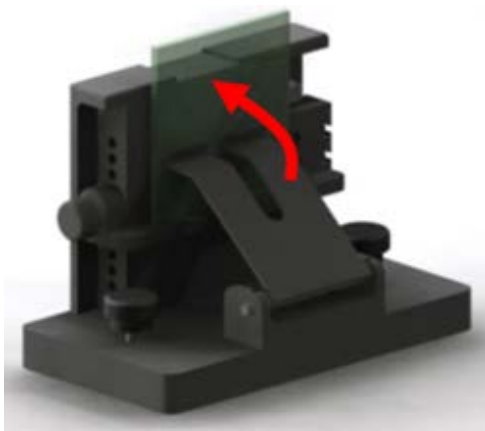
**Figure 5** Preparing a sample plate

2. Open the fixing arm and insert the sample.



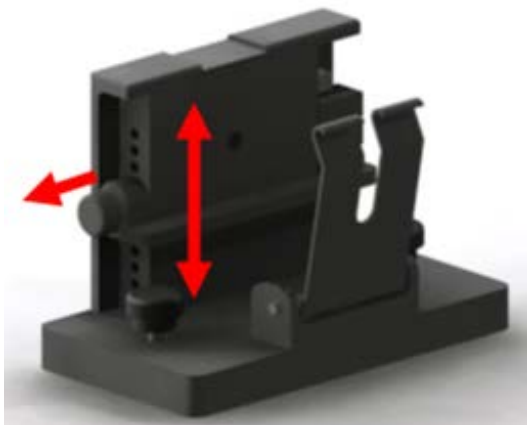
**Figure 6** Opening the fixing arm

3. Close the fixing arm to fix the sample.



**Figure 7** Closing the fixing arm on the sample

4. Adjust the sample loading height using the height controller depending on the sample size.

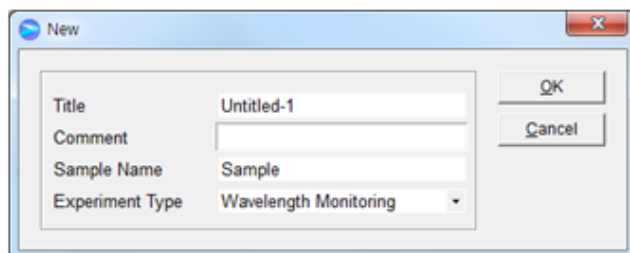


**Figure 8** Controlling the height

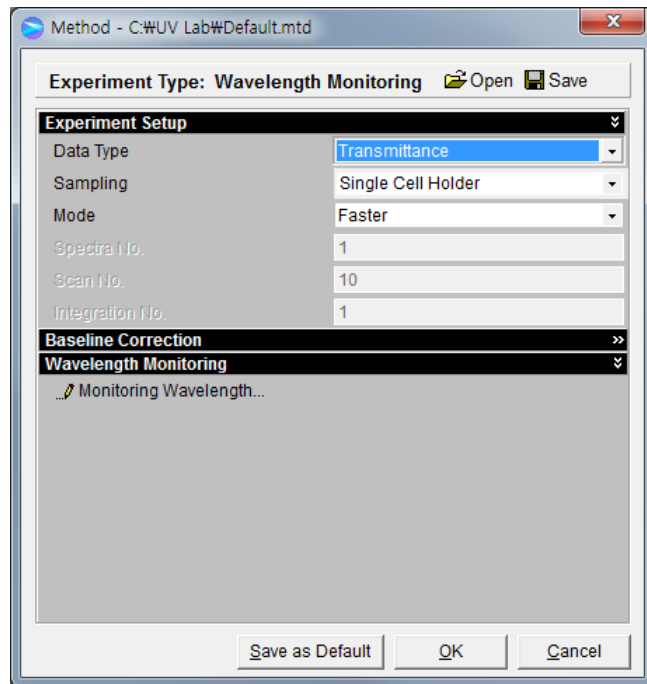
## *Measurement*

**NOTE:** Start the sample measurement after warming up the system for at least 20 minutes.

1. Launch the **UV Lab** software. When the window below is appeared, select **Experiment Type** and click **OK**.



2. Select **Transmittance** mode (%T) in the **Data Type** and select **OK**.



3. Place the air or reference plate on the sampling port and click **Blank** to measure blank.
4. Insert sample in the advanced transmission holder and click **Sample** to measure sample.