

## ***Lambda 365 Variable Pathlength Cuvette Holder Installation Instructions***

---

This instruction sheet describes the installation of this accessory which is used with the Lambda 365 Spectrophotometer.

**NOTE:** *Read these instructions before you install this accessory.*

### ***Contacting PerkinElmer***

Supplies, replacement parts, and accessories can be ordered directly from PerkinElmer, using the part numbers.

See our website:

<http://perkinelmer.com>

PerkinElmer's catalog service offers a full selection of high-quality supplies.

To place an order for supplies and many replacement parts, request a free catalog, or ask for information:

If you are located within the U.S., call toll free 1-800-762-4000, 8 a.m. to 8 p.m. EST. Your order will be shipped promptly, usually within 24 hours.

If you are located outside of the U.S., call your local PerkinElmer sales or service office.

### ***Features***

- Available with various pathlength cells (5, 10, 20, 40, 50, 100 mm)
- Excellent durability



**Figure 1 Lambda 365 Variable Pathlength Cuvette Holder [P/N: N4101005]**



PerkinElmer, 710 Bridgeport Avenue,  
Shelton, CT 06484-4794, U.S.A

Produced in the USA.

## ***Dimensions and Specifications***

<b>Type</b>		<b>Specification</b>	<b>Comment</b>
Outline	Height (mm)	82	
	Width (mm)	120	
	Depth (mm)	170	
Inner	Height (mm)	33	Variable Cell
	Width (mm)	103	
	Depth (mm)	12.6	
Weight (kg)		1.1	

## ***Description***

### ***Connectable Cells***

<b>Description</b>
Precision cell, 5 mm light path, Quartz, 1.7 ml, ea
Precision cell, 10 mm light path, Quartz, 3.5 ml, ea
Precision cell, 20 mm light path, Quartz, 7 ml, ea
Precision cell, 40 mm light path, Quartz, 13.5 ml, ea
Precision cell, 50 mm light path, Quartz, 17 ml, ea
Precision cell, 100 mm light path, Quartz, 35 ml, ea

Other cells are available upon request if what you want is not listed.

## Configuration of the Variable Pathlength Cuvette Holder

### Variable Partition

### Variable Pathlength Cuvette Holder

- ① 5 mm cell
- ② 10 mm cell
- ③ 20 mm cell
- ④ 40 mm cell
- ⑤ 50 mm cell
- ⑥ 100 mm cell

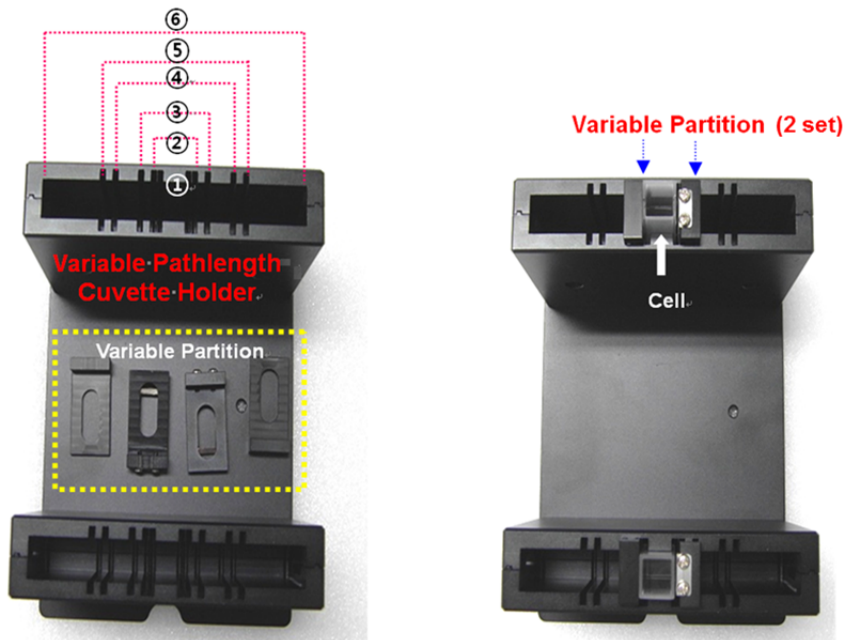


Figure 2 Lambda 365 Variable Pathlength Cuvette Holder



Figure 3 Knob

## Installation

1. Loosen the knob to disassemble the existing cell holder.



Figure 4 Loosening the knob

2. Pull out the cell holder by hand.

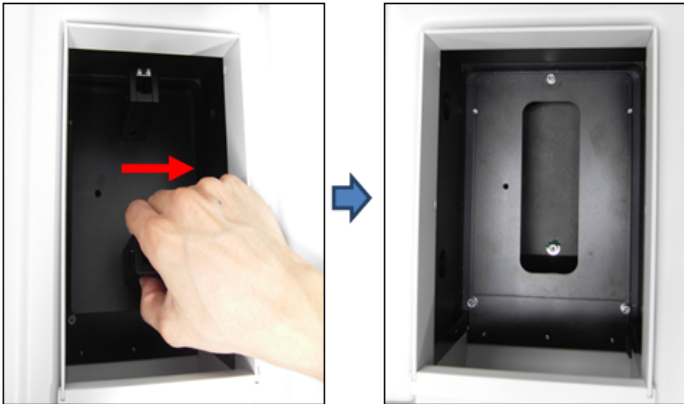


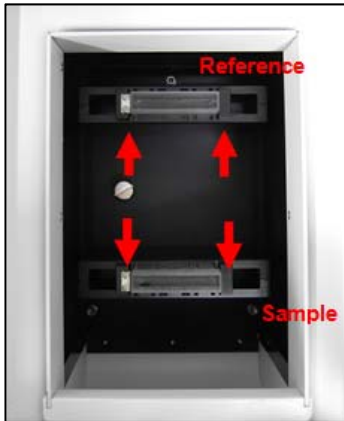
Figure 5 Pulling out the cell holder

3. Insert the variable pathlength cuvette holder in the sample compartment and tighten the knob.



Figure 6 Inserting the variable pathlength cuvette holder

4. Insert the cells in the variable pathlength cuvette holder and fix it with the partition.



**Figure 7** Inserting the cells in the variable pathlength cuvette holder

