

## *Lambda 365 Film Holder Installation Instructions*

---

This instruction sheet describes the installation of this accessory which is used with the Lambda 365 Spectrophotometer.

**NOTE:** *Read these instructions before you install this accessory.*

### ***Contacting PerkinElmer***

Supplies, replacement parts, and accessories can be ordered directly from PerkinElmer, using the part numbers.

See our website:

<http://perkinelmer.com>

PerkinElmer's catalog service offers a full selection of high-quality supplies.

To place an order for supplies and many replacement parts, request a free catalog, or ask for information:

If you are located within the U.S., call toll free 1-800-762-4000, 8 a.m. to 8 p.m. EST. Your order will be shipped promptly, usually within 24 hours.

If you are located outside of the U.S., call your local PerkinElmer sales or service office.

### ***Features***

- Use for measuring the transmittance of various features of Film, Glass, and Plate, etc.
- User-convenient sampling
- Adjustable fixing arms for the samples with various thicknesses
- Compact design



**Figure 1 Lambda 365 Film Holder [P/N: N4101019]**



PerkinElmer, 710 Bridgeport Avenue,  
Shelton, CT 06484-4794, U.S.A

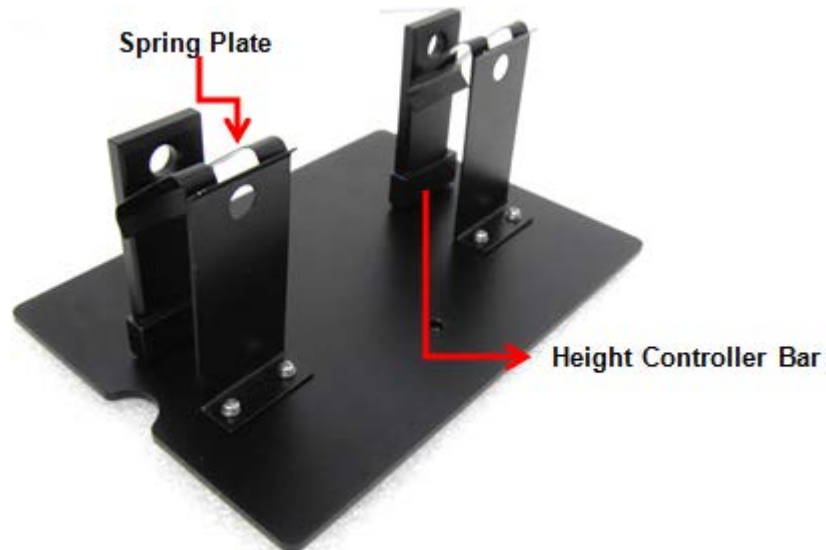
Produced in the USA.

## *Dimensions and Specifications*

Type	Specification
Dimension (mm)	120 (W) x 70 (H) x 170 (D)
Weight (kg)	0.28
Sample Size (mm)	Max. Length : 40 x 80
	Max. Thickness : 15

## *Description*

### *Configuration of Film Holder*



**Figure 2** Lambda 365 Film Holder configuration



**Figure 3** Knob

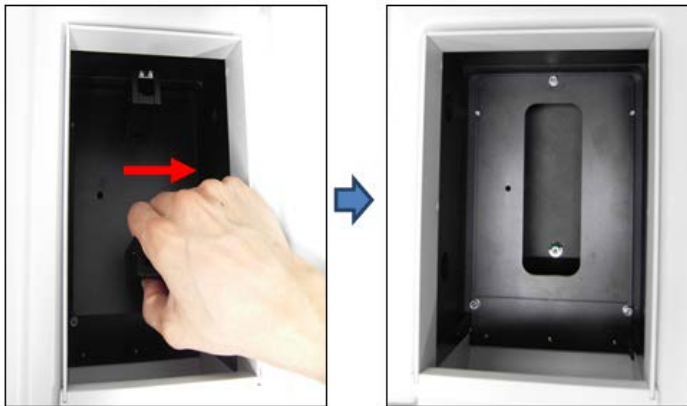
## Installation

1. Loosen the knob to disassemble the existing cell holder.



**Figure 4 Loosening the knob**

2. Pull out the existing cell holder by hand.



**Figure 5 Pulling out the existing cell holder**

3. Insert the film holder into the sample compartment and tighten the knob.



**Figure 6 Inserting the Film Holder in the sample compartment**

## *Sampling*

### *Normal Size Sample*

1. Press down the plate to place a sample.



**Figure 7 Pulling the spring plate and insert a sample**

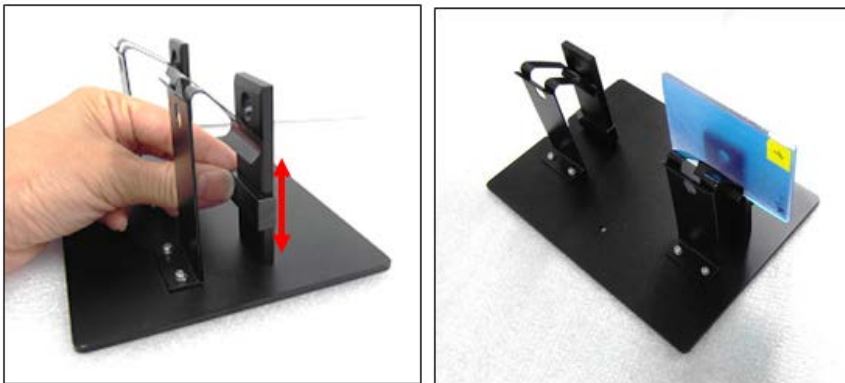
2. Release the spring plate to fix the sample.



**Figure 8 Fixing the sample**

### *Short Height Sample*

- Adjust the sample loading height using the height controller bar, depending on the sample size.



**Figure 9 Controlling the height**

### Thin film sample

- Fix a thin film sample using the spring plate.

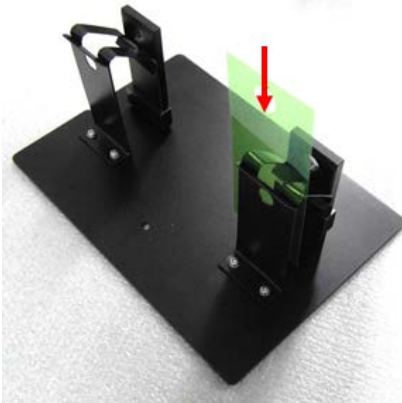
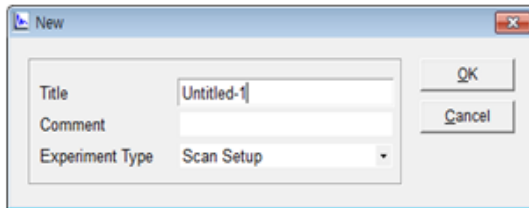


Figure 10 Thin film sample load using the spring plate

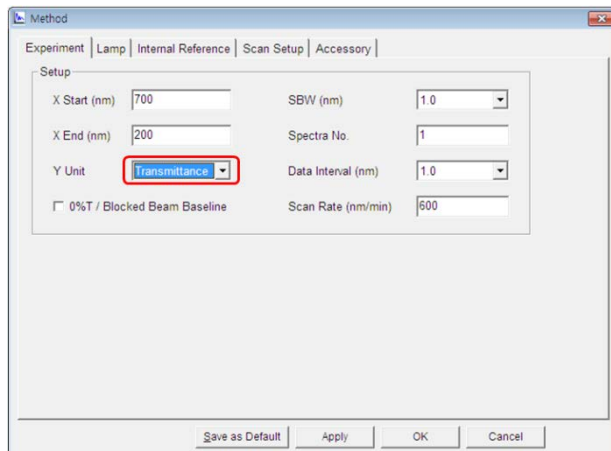
## UV Express Software Measurement

**NOTE:** Start the System Self Test after warming up the system for at least 20 minutes.

1. Select the experiment mode in the **UV Express** folder.
2. Select **OK** after finishing the **System Self Test**.
3. Select **New** to open a new window. Select **Experiment Type** and select **OK**.



4. Open the Method window in main menu. Select **Transmittance** mode in Y unit.



**NOTE:** For more details of method, refer to the *UV Express Software Users Guide*.

5. Select **Apply** and then select **OK** after setting up the parameters.
6. Put the reference samples at both reference holder and sample holder. If no reference sample exists, let the holder empty.



7. Close the lid and select the **Baseline** icon.
8. Measure and verify the baseline spectrum.
9. Insert the sample into the film holder. Close the lid and click on the **Sample** icon.



10. Input the sample name and select **OK**.
11. Check the spectrum and results. Save or print the data.